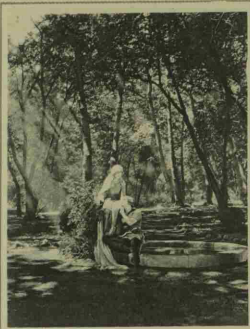


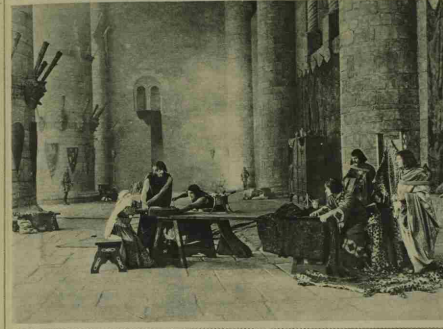
THE ERA OF THE GREAT SINGLE FILM: "ROBIN HOOD"— A FULL-SIZED SCREEN PLAY, AS OPPOSED TO "VARIETY."



THE EARL OF HUNTINGDON (ROBIN HOOD) AND MAID MARIAN IN THE GARDEN OF ST. CATHERINE'S PRIORY.



THE OUTLAWS' HIDING-PLACE IN SHEERWOOD FOREST: ROBIN HOOD (DOUGLAS FAIRBANKS) STANDING ON THE HANDS OF TWO OF HIS "MERRY MEN" (RIGHT CENTRE)—A PICTURESQUE WOODLAND SCENE.



A REALISTIC TORTURE SCENE IN NOTTINGHAM CASTLE: PRINCE JOHN (SEATED ON THE RIGHT) WATCHING THE THUMB-SCREW BEING APPLIED TO THE LADY MARIAN'S SERVING-WOMAN.



AFTER THE WEDDING: THE EARL OF HUNTINGDON WITH HIS BRIDE, LADY MARIAN FITZWALTER.



MEDIAEVAL MACRIFERENCE IN A WONDERFUL SETTING: RICHARD COEUR-DE-LION'S BANQUET HALL IN NOTTINGHAM CASTLE—A SCENE FROM "DOUGLAS FAIRBANKS IN 'ROBIN HOOD,' AT THE LONDON PAVILION.



THE UBQUITOUS ROBIN HOOD ESCAPES BY THE STEPS IN THE HALL OF NOTTINGHAM CASTLE: PART OF THE HUGE SET BUILT FOR THE FILM AT THE HOLLYWOOD STUDIOS, U.S.A., WITH 252 TONS OF PLASTER, AND COVERING AN AREA OF TWO AND A HALF ACRES.

"Douglas Fairbanks in 'Robin Hood,' recently produced at the London Pavilion, by Mr. C. B. Cochran, has proved so popular that its run has been extended. It is one of the most magnificent historical film spectacles that have ever been devised, and gives a wonderful picture of a mediæval town and castle, as well as forest scenes of great beauty. The great success of the play will help to hasten the era of the single film as opposed to the mixed programme, thus developing the picture theatre as a parallel of the regular stage, rather than, as hitherto, of the music-hall, though, naturally, the film world will continue to have its houses devoted to variety. The mere statistics of the "Robin Hood" production, which was carried out at the Fairbanks-

Pickford studios in Hollywood, California, are sufficiently amazing. It is said to have cost £250,000; twenty-two experts spent five months on research work for designing the sets, and 400 workmen were employed for 12 weeks in building them. The huge "Nottingham Castle" set covered 2½ acres, and required 252 tons of plaster to construct its walls. The banquet hall, as made for the film, is the largest room in the world. For the costumes and weapons there were used 20,000 yards of material, 1,000 wigs, 500 swords, 2,000 spears, 2,000 shields, and 500 daggers. Douglas Fairbanks, as Robin Hood, excels himself with his athletic feats. The table manners of England's chivalrous King Richard, as shown in the film, have caused a good deal of discussion.